



# Bishop Wordsworth's School

Exeter Street, Salisbury, Wiltshire SP1 2ED

Telephone: 01722 333851

Fax: 01722 325899

E-mail: [admin@bws.wilts.sch.uk](mailto:admin@bws.wilts.sch.uk)

Website: [www.bws-school.org.uk](http://www.bws-school.org.uk)

Head Master: Dr S D Smallwood BSc (Hons) PhD NPQH

16 November 2017

Dear Parent/Guardian

## **Cross Country Kit**

In view of celebrating the boys' success, I would like to offer the opportunity to purchase Team BWS Cross Country kit. As a team I think it is important we look the part when running.

The vest will be blue purchased from Michael Hope our school supplier and will feature TEAM BWS on the back, with the school crest central on the front with 'ESAA National Cup Final, Cross Country, Sevenoaks 2017' underneath, with the individuals initials on the bottom right.

There will also be a waterproof top available, with the same detail as the vest.

The kit is not compulsory, but I would like boys to run in all blue. As well as this kit, which is to be purchased through myself, all TEAM BWS items are available on the Michael Hope website and are of course transferable across the various sports.

The finals are on **25 November**, Mr Griffey will be taking a bus departing school at **7.30am** but the event is at **Sevenoaks School, Kent** for any parents wishing to travel. Race times and address and further details are attached.

**Please notify how you wish your son to travel, either on the bus or with you personally.**

**If your son is unable to run, please notify me immediately in order to call up a reserve.**

**Please complete the attached cross country kit order form. The deadline for replies for kit is Friday 17 November 2017 – to be handed to Mr Demain-Griffiths by morning break.**

## **Payment Options:**

Please arrange payment online via [www.scopay.com](http://www.scopay.com). If you need a link code, please email [amh@bws.wilts.sch.uk](mailto:amh@bws.wilts.sch.uk) (link codes are only needed for online account set up).

Yours sincerely

Mr Richard DEMAINE-GRIFFITHS

Director of Sport

[rdg@bws.wilts.sch.uk](mailto:rdg@bws.wilts.sch.uk)

**Cross Country 2017 – KIT**

**ORDER FORM**

**TO BE RETURNED TO THE MR DEMAINE-GRIFFITHS BY FRIDAY 17 NOVEMBER 2017**

Please indicate below which size and **initials** you would like.

<b>Item</b>	<b>Initials</b>	<b>Size</b>	<b>Price</b>
Vest		XS, S, M, L,	£14.50
Jacket		XS, S, M, L,	£27.50

I confirm that I have made an online payment via [www.scopay.com](http://www.scopay.com).

Signed: ..... (Parent/Guardian)

Student Name: ..... Date: .....



ESAA

English Schools' Athletic Association



From:

Geoff Williams (ESAA XC Cup Co-ordinator)  
4 Ashfield Close  
Ashford, Near Barnstaple  
Devon EX31 4BP

email: geoff.williams1949@hotmail.co.uk  
01271 346386  
07868 369741

## **ESAA Schools Cross Country Cup Final: Saturday 25<sup>th</sup> November 2017**

Dear Colleague,

Congratulations on reaching the final of the 2017 ESAA Cross Country Schools' Cup which is being hosted Sevenoaks School, Kent.

**Please read this letter very carefully in conjunction with the relevant attachments listed below:-**

**Team declarations must be completed on line by midnight on WED 15<sup>TH</sup> NOVEMBER - PLEASE ACT FAST**

Entries not received by this deadline may not be accepted. Please use the same email and access code as for previous rounds.

**Directions to the venue and site map** PLEASE APPROACH FROM THE SOUTH NOT THROUGH SEVENOAKS TOWN. Take the A21 Sevenoaks bypass southwards to the Tonbridge/Hildenborough junction turning sharply onto the A225 towards Sevenoaks. After a steep hill the school entrance is on the right after 2 miles.

**School Minibus Parking Permit** (please print off and display prominently on your minibus windscreen)

**A draft generic course map showing all race routes**

**A travel claim form** – to be returned by 31st December, 2017

---

On race day Team Managers should report to the registration area where they may collect their school's welcome pack.

Team declarations **MUST** be made between 10.30am and 12.30pm (NO LATER)

It is imperative that the numbers are issued to athletes as per programme and any substitutes are declared early using the appropriate declaration forms provided on arrival. A NIL CHANGE REPORT IS HELPFUL.

***Please remember to bring 4 safety pins per athlete***

**Parking** – please follow the instructions given by the Car Park Stewards who will be responsible for all parking arrangements. Please refer to the enclosed map. School minibuses driven by the teacher/team manager must be parked as directed by the Stewards. Ample spectator car parking at cost is available at Knole House (National Trust Members free) and Sevenoaks Sports Centre. Visitors are advised to allow 10/15 minutes to walk to the course. There is disabled blue pass car parking adjacent to the course. Please note that there will be a restriction on parking in the approach roads to/around the school.

**If you are travelling by coach** please note that athletes must be dropped off in Solefields Road Car Park before crossing the main street to the course (supervision advised). Coach drivers will then be expected to find an off-site coach park.

**If your school is arriving by coach you MUST INFORM me by 9am on Monday 20<sup>th</sup> November.**

**Presentations** – Although many of you will have long journeys home all are asked, as a matter of courtesy, to attend the presentation ceremony at 3.15pm in the Tennis Hall at the School.

### **Cup Final Timetable:**

10.30-12.30pm	Team Declarations and Course open for inspection
1:00pm	Intermediate Girls' Final
1.30pm	Junior Boys' Final
2:00pm	Junior Girls' Final
2:30pm	Intermediate Boys' Final
3:15pm	Presentations in the School Sports Hall

### **COURSE FOOTWEAR**

The course is a mix of underfoot conditions including playing fields and woodland tracks but will be dry as the underlying soil is all sandy.

Recommended footwear is max. 11mm spikes or fell shoes. Call me if you require further advice

**ON THE DAY OF THE FINAL - EMERGENCY ONLY please ring my mobile 07868 369741 or Dave Paver on 07778 950200**

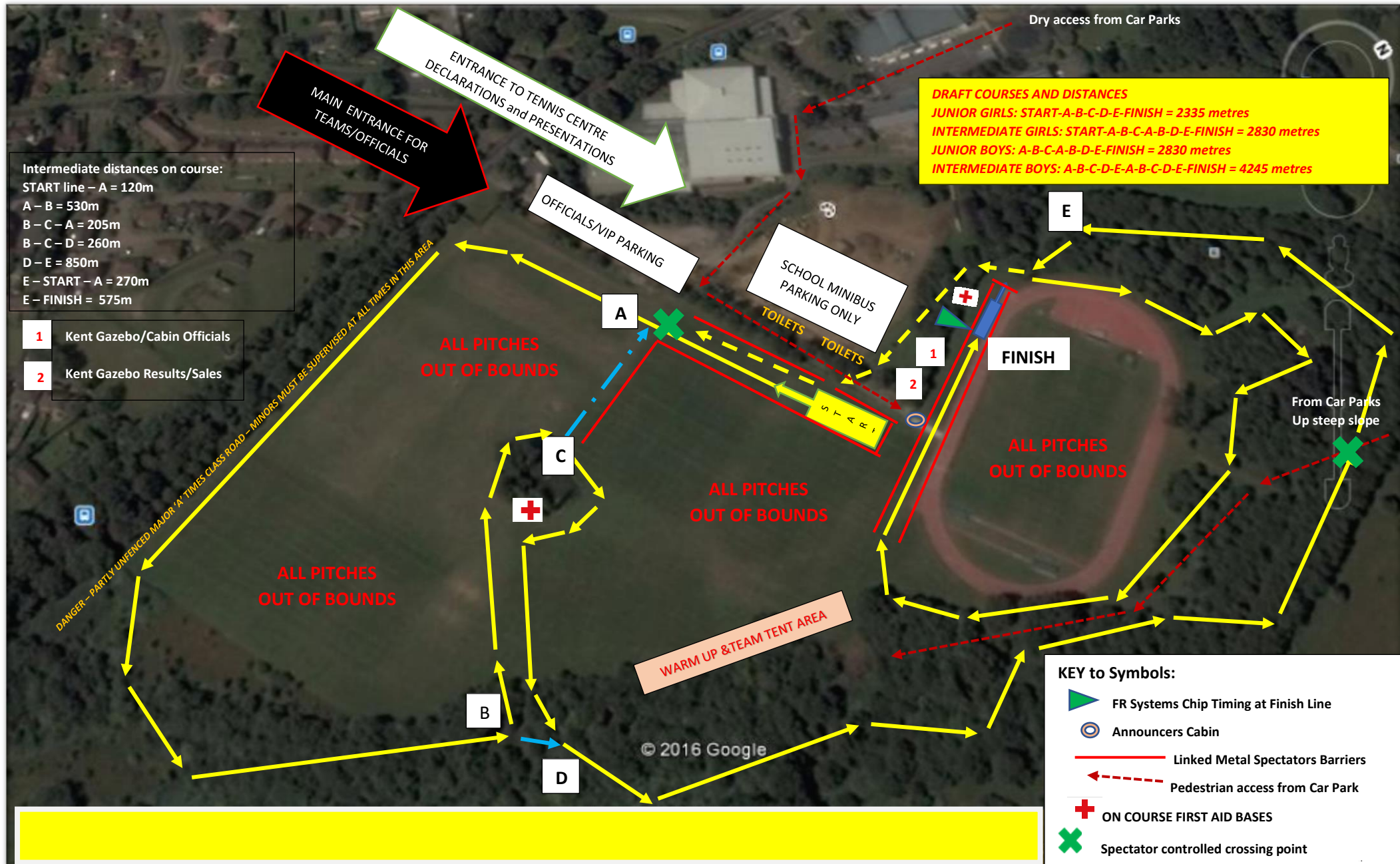
Again congratulations, but remember to **move quickly as the Cup Final is a week earlier than normal**. It is essential that you meet the tight deadline if we are to get your athletes' names in the programme. I look forward to meeting you and your team and wish you a safe journey and enjoyable racing in the ESAA Cross Country Cup Final.

Yours in sport,

*Geoff Williams*

Geoff Williams (ESAA Cross Country Cup Final Co-ordinator)

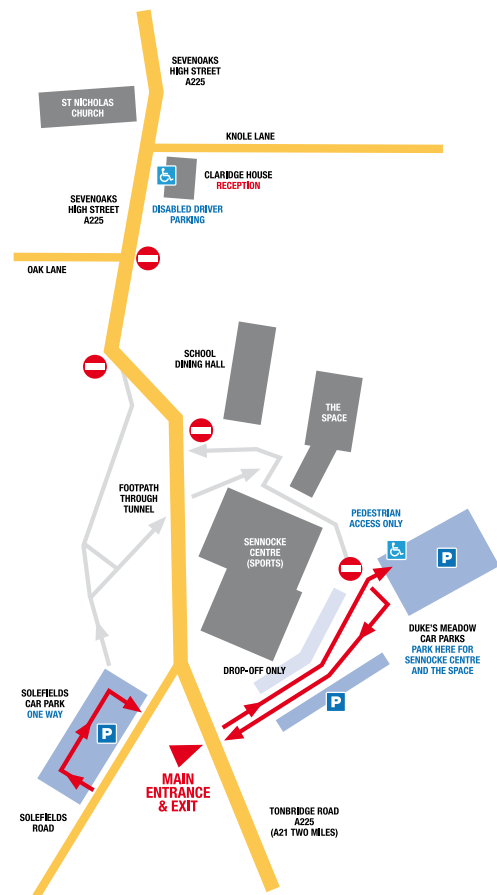
# ENGLISH SCHOOLS CROSS COUNTRY CUP FINAL – SEVENOAKS SCHOOLS, KENT – SATURDAY 25<sup>th</sup> NOVEMBER 2017





# SEVENOAKS SCHOOL

## Parking



## How to find us

### BY ROAD

Sevenoaks School is about 10 minutes drive from Junction 5 of the M25, the London Orbital Motorway. It is also within reach of the M20 and M2 motorways, and the A21 London to Hastings trunk road.

### From M25 (west)

Leave at Junction 5 (A21 Hastings). Immediately take the A25 turn-off (Riverhead) to the roundabout at Riverhead. Turn right and follow the road past Sevenoaks Station and up into Sevenoaks. Go right through the town towards Tonbridge. Soon after the church the road bends to the left, after which the school's Duke's Meadow car park is the second entrance on the left. Solefields car park is in Solefields Road, opposite the entrance to Duke's Meadow.

### From M26 (east)

Leave at Junction 2A, follow signs to A25 (Sevenoaks). After passing through Seal turn left at the traffic lights, follow the road up into the town and on towards Tonbridge. Soon after the church the road bends to the left, after which the school's Duke's Meadow car park is the second entrance on the left. Solefields car park is in Solefields Road, opposite the entrance to Duke's Meadow.

### From A21 (south)

Leave the A21 at the Sevenoaks turn off, south of the town. At this roundabout, take the third turning (Sevenoaks). Half a mile from the top of the winding hill, you will reach the school on your right, just prior to the town centre.

### Disabled access

Disabled parking is available in The Flat car park, via Duke's Meadow entrance. Please let us know if you require disabled parking. Any prospective parent who requires wheelchair access when they visit the school is encouraged to contact the Admissions department in advance.

### BY AIR

Sevenoaks School is 30 minutes drive from London Gatwick and about 50 minutes drive from London Heathrow. Other airports within easy reach are London City and London Stansted. On request, the school will organise taxis for pupils to and from airports and ensure taxi sharing where possible. Parents are charged for the cost of the taxi.

### BY RAIL

Fast trains run from London Charing Cross, London Waterloo East and London Bridge (approx. 30 minutes) as well as from the Channel Ports and Ashford International with its Eurostar connections. Sevenoaks Station is within walking distance (15–20 minutes) of the school and taxis are available at the station.



Map © Tele Atlas / © 2007 Crown Copyright

# SEVENOAKS SCHOOL

## Campus map



1. Claridge House
2. St Nicholas Church
3. Manor House
4. Girls' International House
5. Temple House
6. Temple Classroom
7. Sennocke House
8. Biology laboratories
9. Lower School Common Room
10. Head's House
11. Health Centre
12. Cottage Block
13. Johnson Library
14. Aisher Hall
15. Marley Centre
16. The Space
17. Sackville Theatre

18. Art, Languages, Dining Hall
19. Science and Computing
20. Swanzy Block
21. Old School
22. Almshouses
23. Froy Gates
24. Pedestrian underpass
25. Duke's Meadow car park
26. Solefields Road car park
27. Design Technology
28. Estates Department
29. International Centre
30. Park Grange
31. Lambardes
32. School House
33. Johnsons

- Sports facilities
34. Athletics track
  35. Sennocke Centre
  36. Bailey Tennis Centre
  37. Top Astro pitch
  38. Lower Astro pitch
  39. Post Office Tennis Courts
  40. Duke's Meadow Tennis Courts
- DM Duke's Meadow pitches  
PG Park Grange pitches

